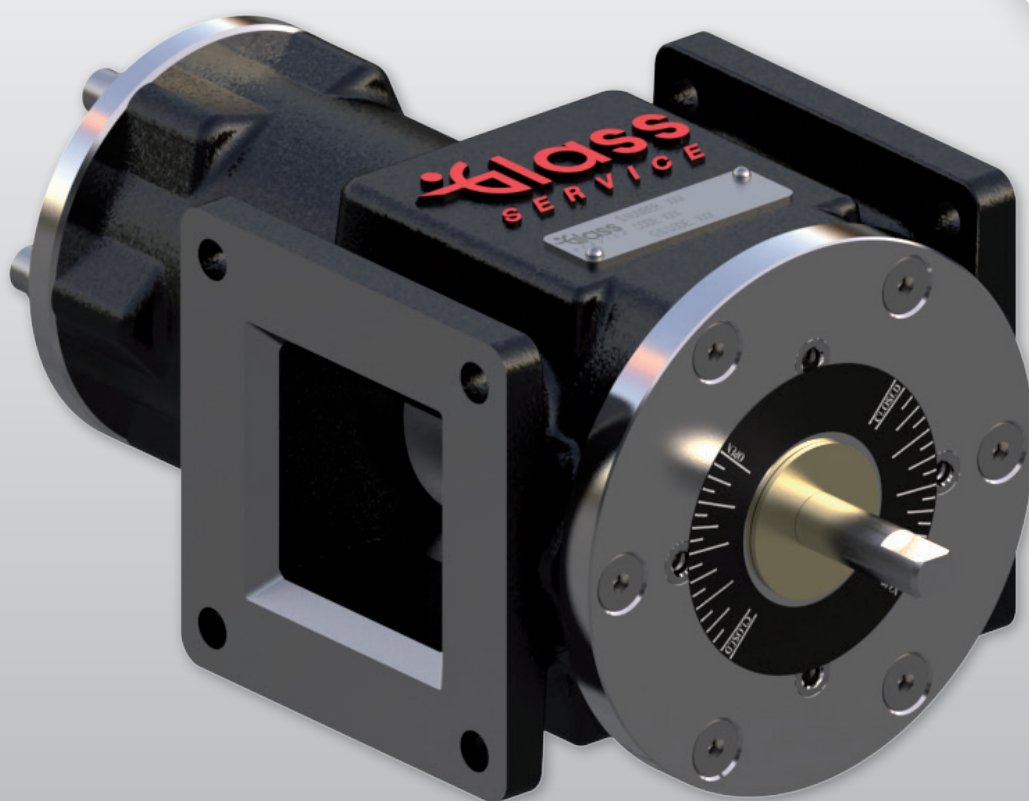




SOLUTIONS FOR THE GLASS INDUSTRY

ADJUSTABLE PORT AIR VALVE MOD. VV





GENERAL DESCRIPTION

Glass Service designed and fabricates an adjustable port air valve for control purposes. They are a dependable and accurate means of controlling the flow of air at variable pressure for any type of burner or system. The adjustable port feature permits sizing the valve to fit any application after it has been installed. Linkages can be adjusted for full or limited valve travel.

Flow control may be either manual or automatic. These valves are designed to be used as efficient control systems, installed in any position, but not as shutoff valves.

Internal parts of the valve can be cleaned or replaced without removing the valve from the pipeline.



ADJUSTABLE PORT AIR VALVE MOD. VV

MATERIALS

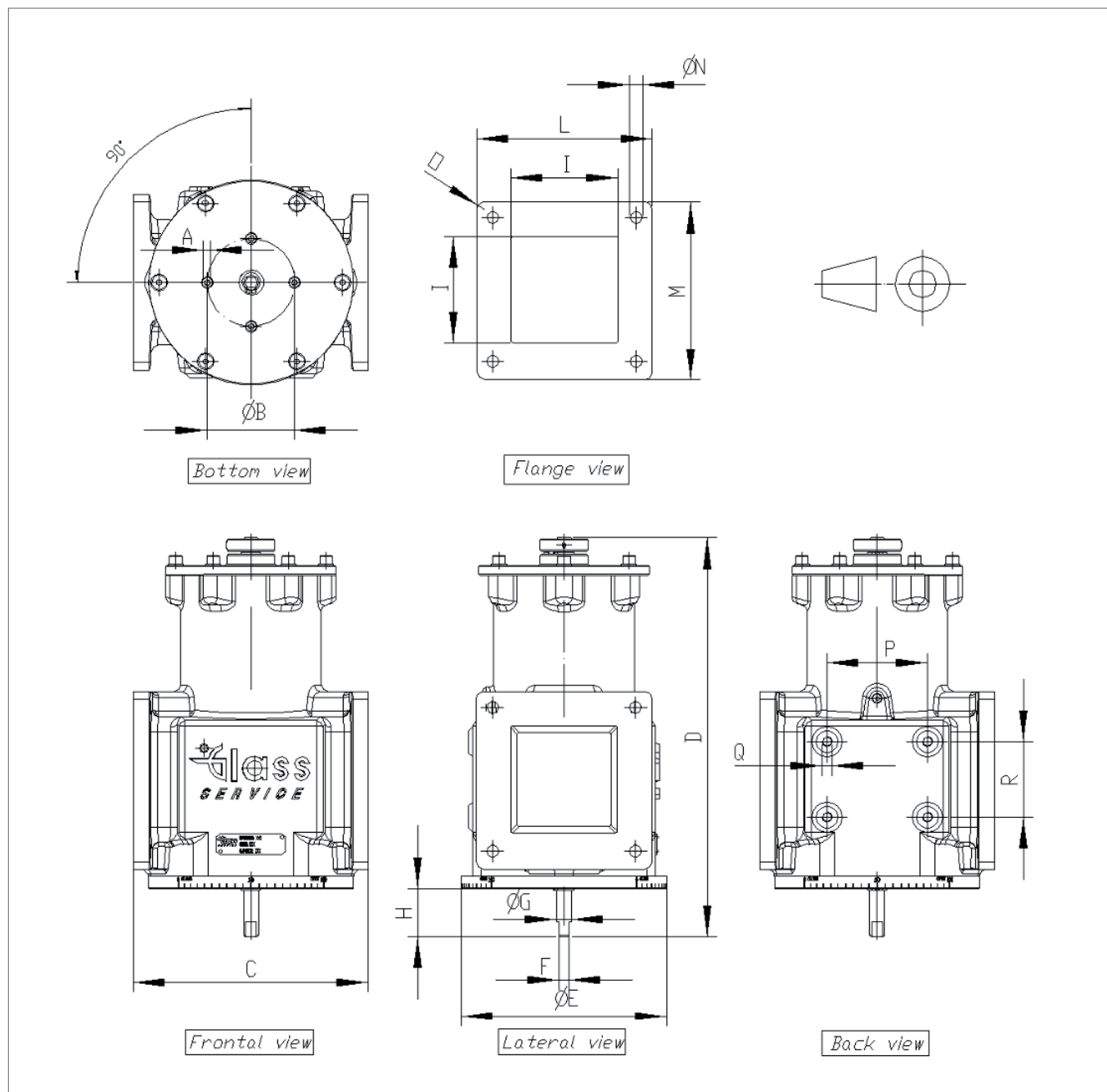
The valve is composed of a cast iron shell with internal components in anticorodal aluminum and self-lubricated bronze bushing. The design is completed with NBR gaskets.

GENERAL 3D VIEW





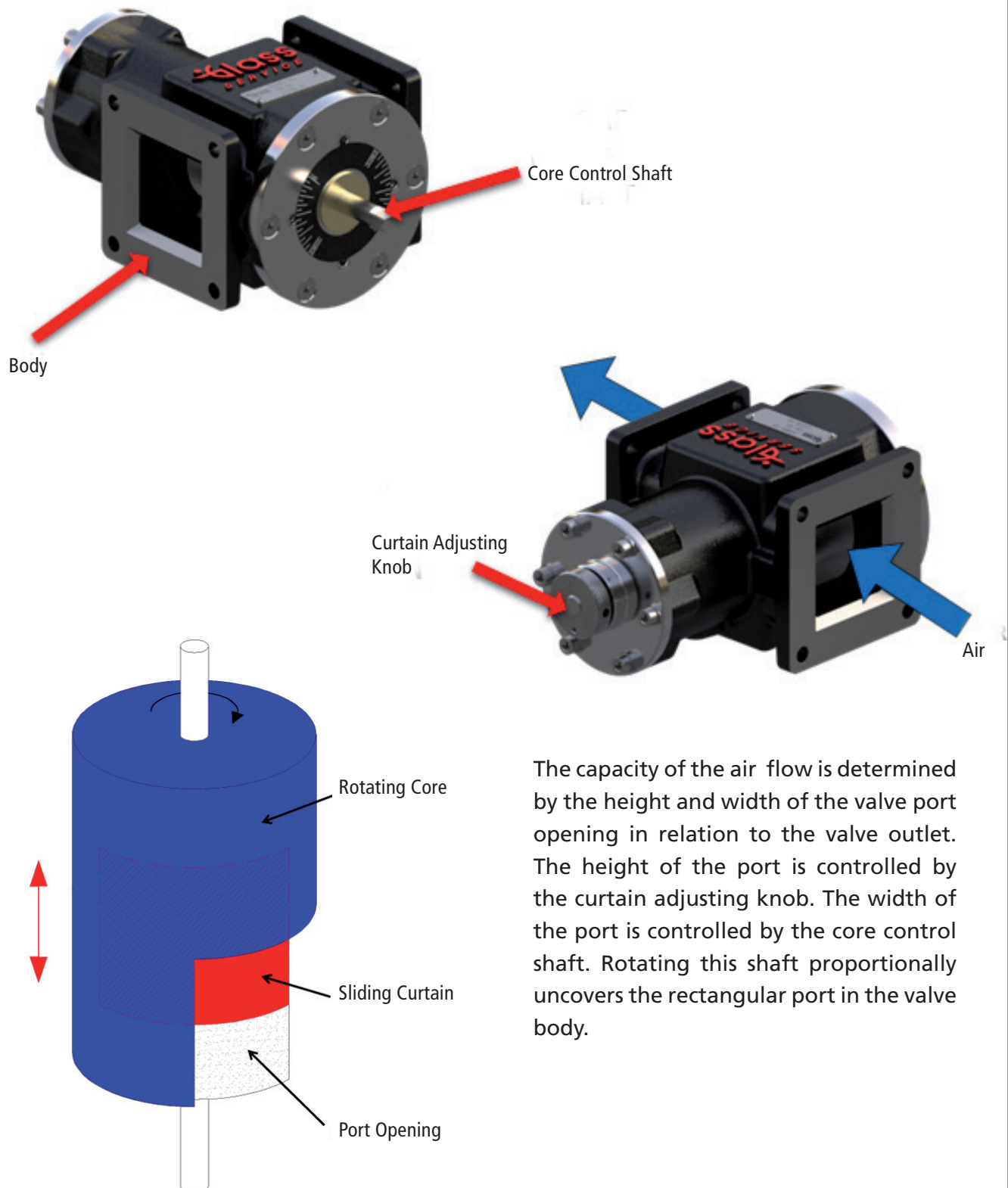
VALVE MAIN DIMENSIONS



TYPE	A	B	C	D	E	F	G	H	I	L	M	N	O	P	Q	R
BODY B	M6	42	114.4	224	100	8	12	38	49	84	84	7	R6	42	M6	42
BODY C	M6	70	137	254	120	8	12	38.5	62	102	102	9	R6	50	M6	50
BODY D	M6	70	187.5	319	164	8	12	38.5	85	140	142	10.5	R6	80	M8	60

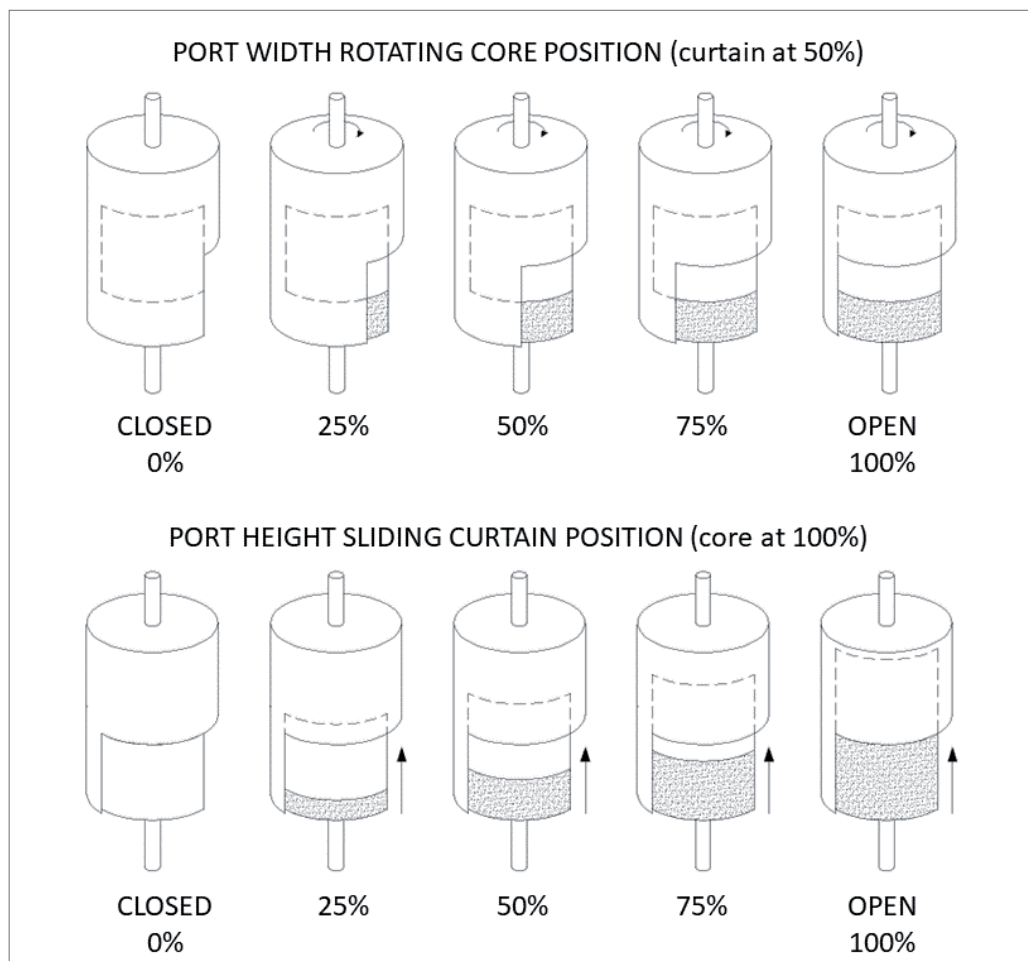
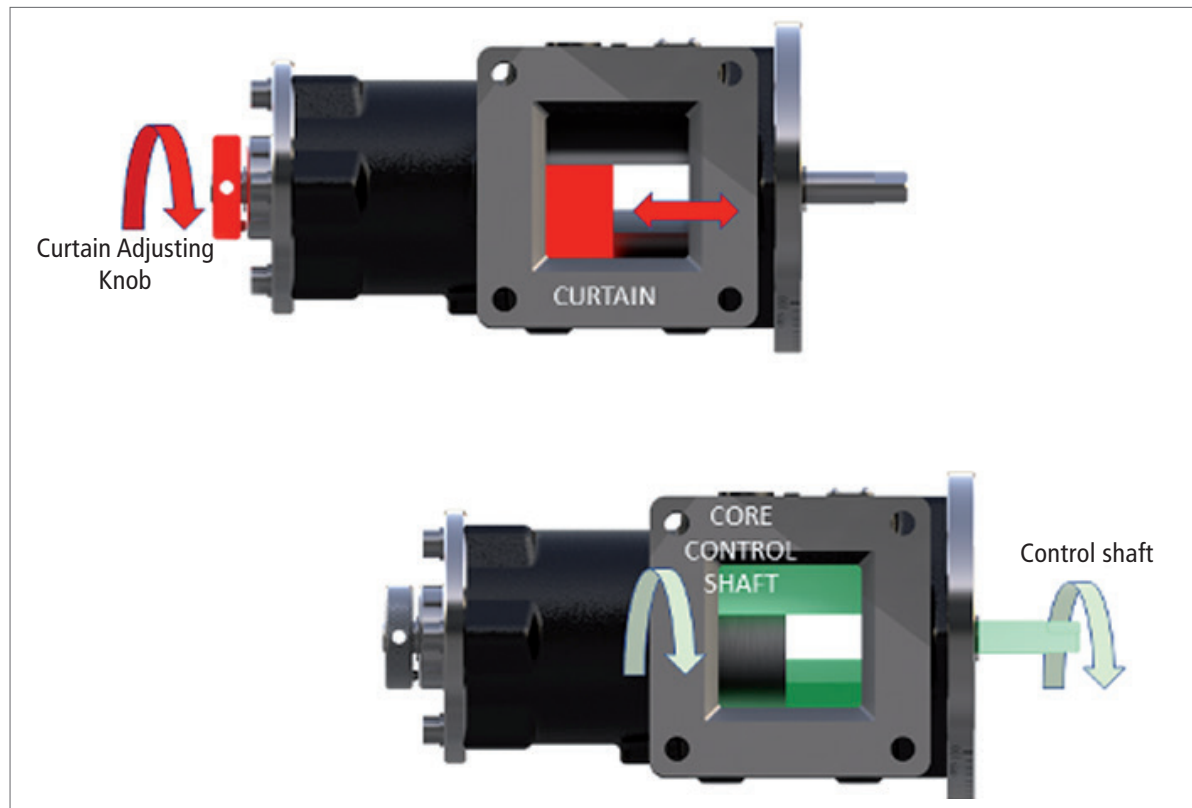
OPERATING PRINCIPLE

Manual or automatic control is accomplished by moving the curtain adjusting knob and the core control shaft as shown in the diagram below.





Rotating the curtain adjusting knob, the curtain moves back and forth, opening or closing the port.
Rotating the control shaft, the core rotates accordingly opening or closing the port.

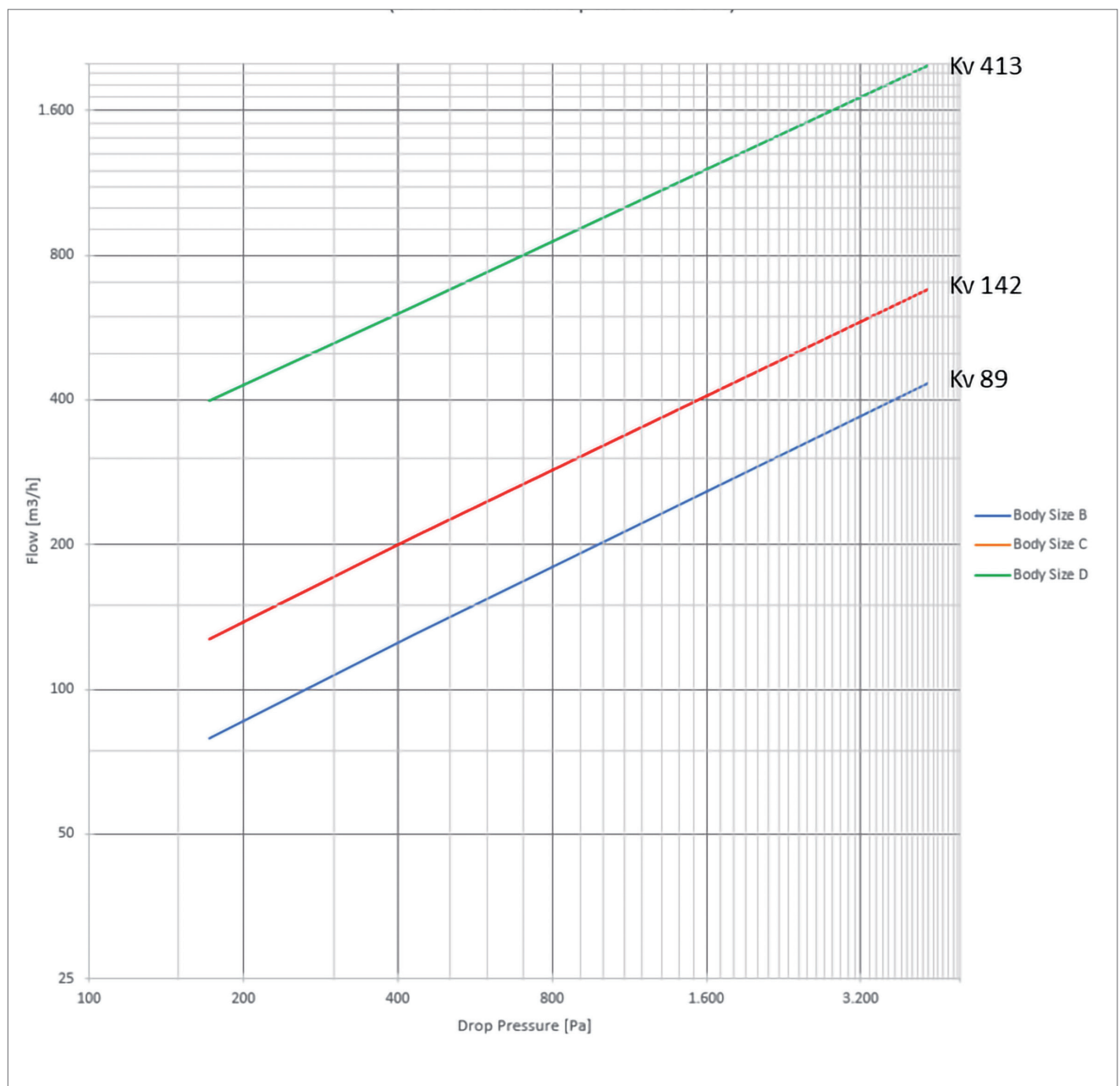


THE MAIN FEATURES

The main features of the adjustable port air valve are:

- Improved flow characteristics over butterfly valve design
- Adjustable port for limiting the maximum flow rate
- Control of the air flow at variable pressure for any type of burner or system
- High reliability due to the cast iron construction
- Orientation-free installation
- Three body sizes for a wide working range
- Easy disassembly for fast maintenance without removal from the pipeline
- Adapts for direct connection or linked connection with actuators

CAPACITIES



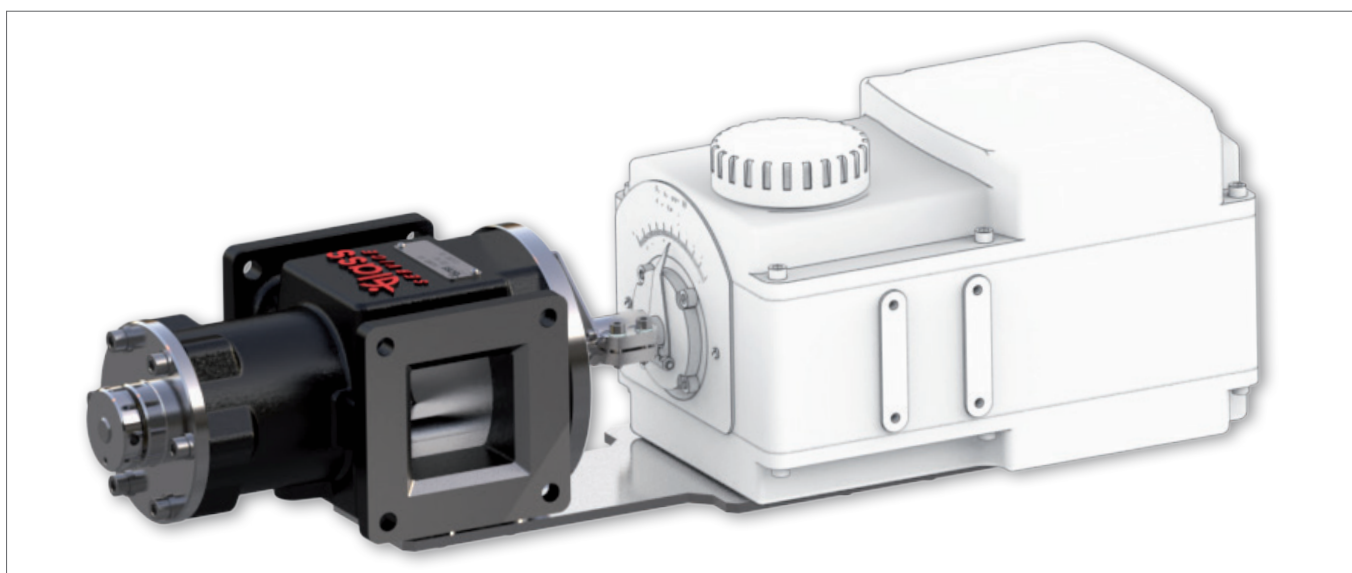


INSTALLATION

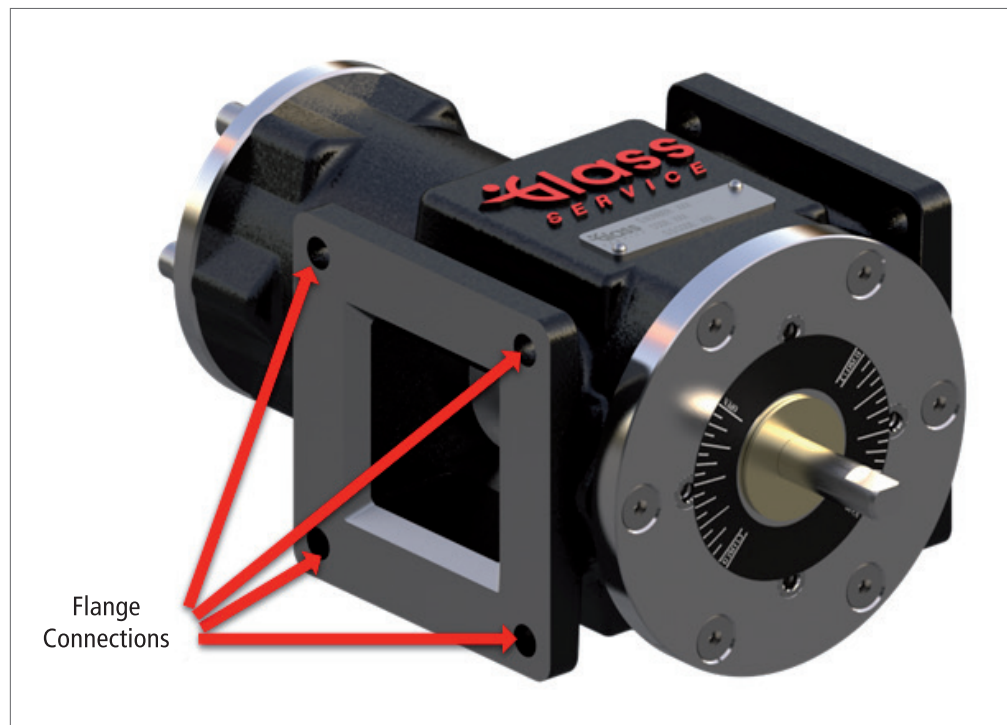
Glass Service adjustable port valve is equipped with tapped mounting pads to facilitate the installation of multiple control motors available in the market.



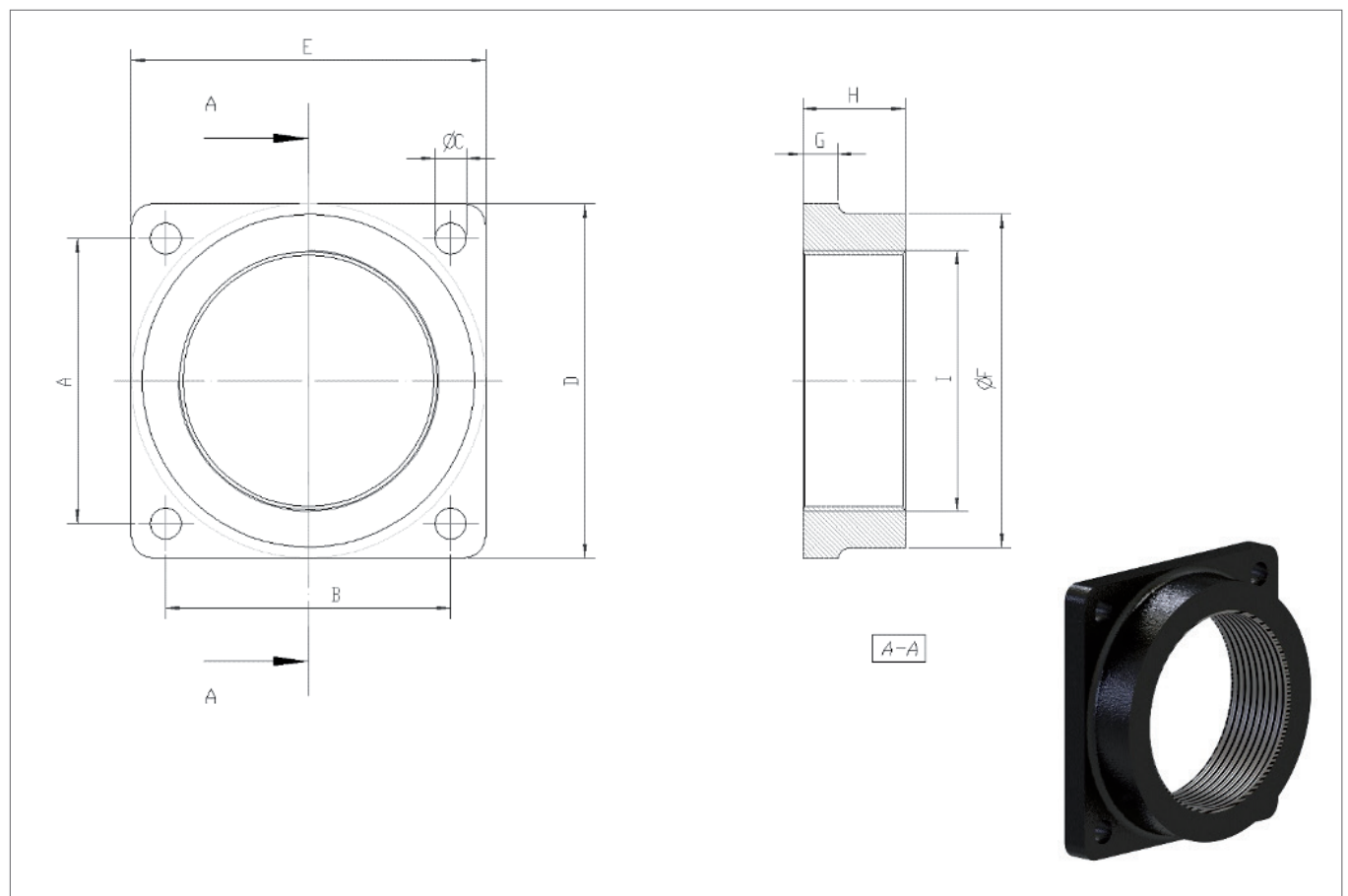
Levering kit is also supplied for connection with servomotors.



Installing the **Glass Service** adjustable port valve is very easy and fast: just n°4 screws for each flange and the valve is ready to work.



Threading kit is also available to convert the flange connection to standard threaded connection.



CONNECTION KIT DIMENSIONS

VALVE SIZE	A	B	C	D	E	F	G	H	I
B-DN40	64	64	7	84	84	76	10	27	G1"1/2
B-DN50	64	64	7	84	84	76	10	27	G2"
C-DN50	82	82	9	102	102	96	10	29.5	G2"
C-DN65	82	82	9	102	102	96	10	29.5	G2"1/2
C-DN80	82	82	9	102	102	96	10	40.5	G3"
D-DN80	114.5	114.5	10.5	142	140	136	10	39	G3"
D-DN100	114.5	114.5	10.5	142	140	136	10	39	G4"

MAINTENANCE

Internal parts of the valve can be cleaned or replaced without removing the valve from the pipeline.





CUSTOMERS WORLD WIDE

VV-22-01-E



PRODUCTS AND SERVICES

turn key projects

batch plants

furnaces:

recuperative

regenerative

gas fired

oil fired

oxy-fuel fired

mixed fuel

electric

forehearth:

colouring forehearth

combustion systems

day tanks

mini melters

boosters

bubblers

metallic recuperators

batch chargers

stirring machines

glass level controls

frit dosing and transport

control cabinets

SCADA and DCS

cooling systems

Services:

installation and supervision

commissioning

training

preheating

technology transfer

assistance

laboratory and analysis

refractory consulting

project financing